

# ASSISTED LIVING

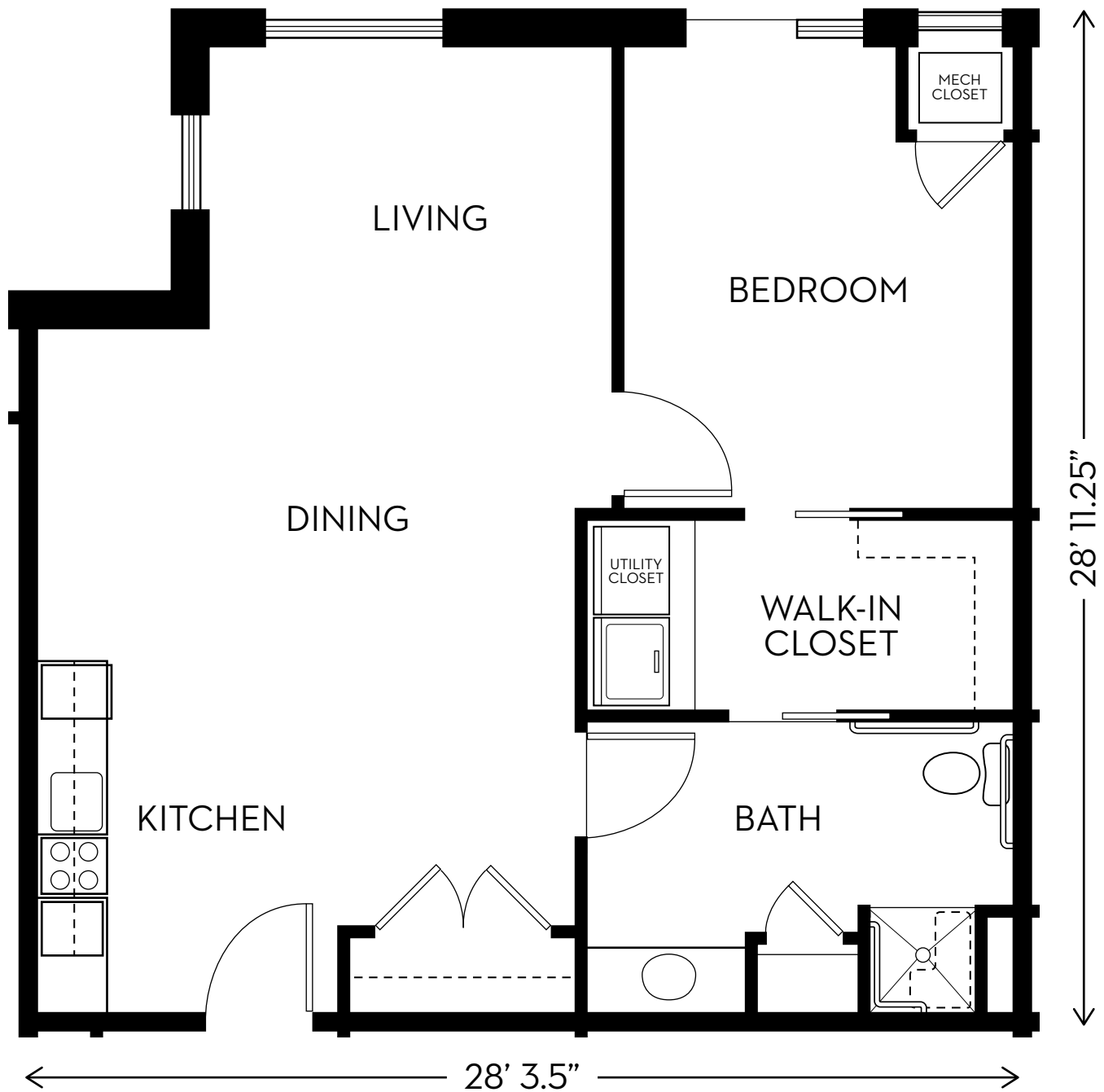
## Daisy

One Bedroom Floor Plan

Approximately 815 square feet

# THE IVY

OF MCKINNEY



3392 MEDICAL CENTER DRIVE — MCKINNEY, TX 75069  
(972) 351-8888 | FAX: (972) 548-0477 — THEIVYOFMCKINNEY.COM